

5 BEDROOM VILLA FOR SALE IN FINESTRAT

Price **€2,250,000**



REF: 2424291

PROPERTY FEATURES

- South East facing, Panoramic sea views
- Infinity swimming pool with LED lighting, Pre-installation Jacuzzi
- Elevator with capacity for 6 people
- Guest Accommodation with lounge & kitchen
- Garage with the possibility to park up to 6 cars
- Home Automation, Alarm system with camera and video recording
- Air conditioning, Underfloor heating, Climalit Glazing, Solar
- Landscaped gardens, Summer Kitchen/BBQ, Chillout Areas
- 24/7 Secure residential area with Private Club, Gym, Fitness Room, Tennis/Padel & Restaurant
- Terraces with view points, Landscaped Garden with Auto-irrigation

PROPERTY DETAILS Villa 5 is currently completed and the remaining 4 are under construction.

The properties have 5 bedrooms, 6 bathrooms, living room, dining room, kitchen, laundry room, solarium, barbecue area, swimming pool, garage and numerous terraces, some of them covered.

With a total built area of 582m², distributed over 4 levels, all connected by stairs and lift. It has a swimming pool with infinity views with a water surface of 63m², covered terraces with a surface of 70m², and uncovered terraces of 247m².

On the lower level there is a garage with the possibility to park up to 6 cars and with a height of 5,5m.

The next floor has 2 en-suite bedrooms, each with a bathroom, a living room and a small kitchen. It is ideal to accommodate friends, older children or even to rent out.

The upper floor is the day area, where the pool, terraces, barbecue area, living room, kitchen and guest bathroom are located.

The upper floor is the sleeping area with two bedrooms with their respective

bathrooms, and the master bedroom, with an area of 50,46m², with a large dressing room, bathroom and two private terraces.

The property is crowned by a solarium and a spa area.

As the property is under construction it would be possible to customize the finishes and spaces to suit all your needs, enjoying the incredible views to the bay of Benidorm from every corner.

It comes with fully fitted kitchen with porcelain counter top and integrated appliances, Laundry room, Guest toilet, bathroom furniture and bespoke fitted wardrobes manufactured by prestigious Italian brands.

Many additional features and benefits include:

Porcelain finished infinity swimming pool with LED lighting

Pre-installation for jacuzzi on solarium

Landscape designed garden

Air conditioning system distributed via concealed ducting

Domestic hot water installation using solar panels and a 200 litres electrically heated accumulator tank

Underfloor heating system

Telecommunication installation

Elevator with capacity for 6 people

Electrical and digital fittings by Bticino® brand

Home automation system "my home up" by Bticino® brand including lighting control and air conditioning

Alarm system with video recording camera

Thermal and Acoustic installation.

Porcelain wall and floor tiles.

LOCATION Finestrat is a picturesque coastal town with a wonderful bay protected by a rocky terrain and has an award winning blue flag beach "La Cala de Finestrat". It is a little paradise between the sea and the mountain with a beautiful beach of fine white sand and plenty of restaurants allowing visitors to taste delicious cuisine by the sea. It is situated only 10 minutes from the main town of Benidorm.

In the centre of the La Baixa Marina area, you will find the popular Spanish resort of Benidorm, one of the main tourist destinations of the Costa Blanca. Its excellent beaches, a variety of accommodation, restaurants and many recreational activities mean that it is a success among tourists from all over Spain and northern Europe.

Benidorm offers endless possibilities: from taking a walk along the promenade, swimming in the crystal clear waters, practicing water sports, a boat trip to the island of Tabarca or strolling through the historic centre of Benidorm, perched on a promontory, the old town. It is in great contrast to the wide avenues of the main tourist city.

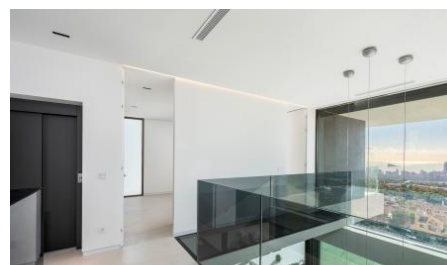
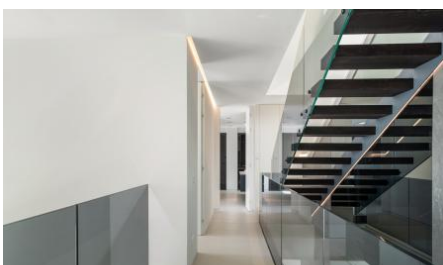
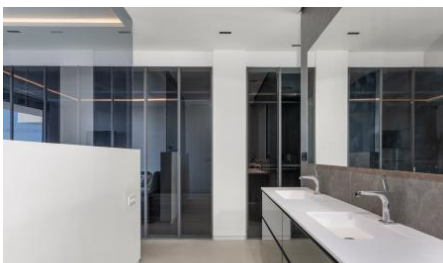
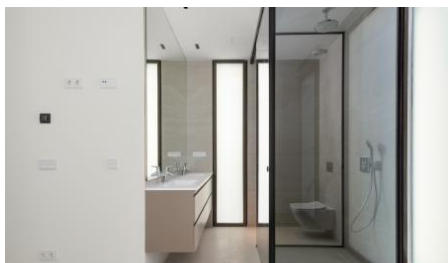
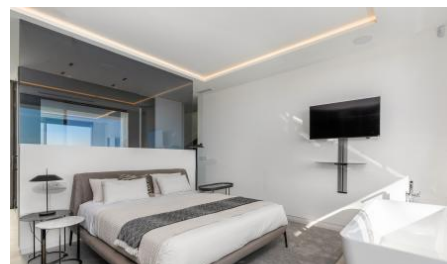
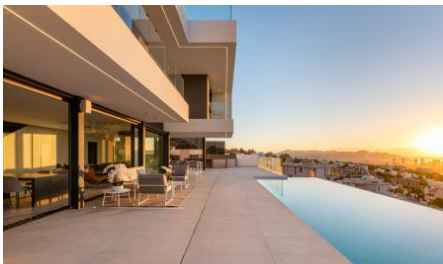
Then there are the local cultural festivals, beautiful cuisine and excellent shops; in fact it is one of the largest tourist centres of the Costa Blanca. Complete with its beaches of fine sand, crystal clear waters, privileged climate and a great infrastructure, everything has given Benidorm that it has given this region, also equipped with a great infrastructure of high quality services, its deserved fame.

Benidorm is what you want it to be: full of fun, with a fantastic nightlife, but it also

offers peace and tranquillity with its lovely gardens and lonely coves. Really a place with something for everyone, it is not surprising that it is so popular.

Please note that for security reasons the map reference provided does not reflect the precise location of this property.

PROPERTY PHOTOS





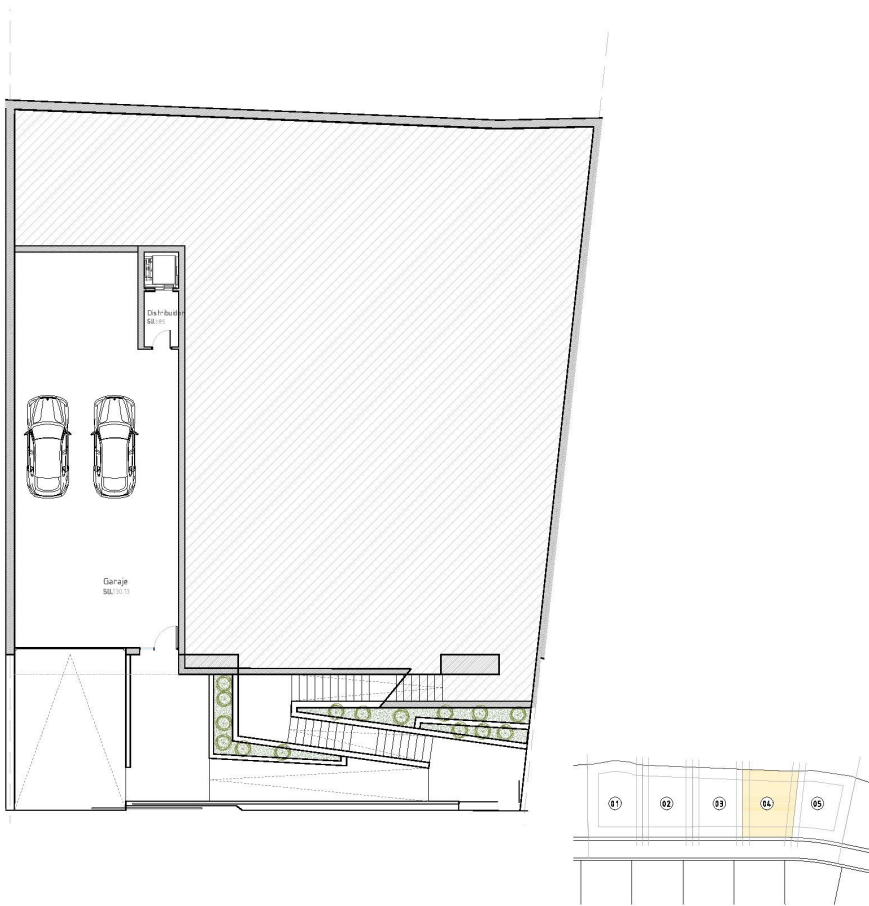
LOCATION



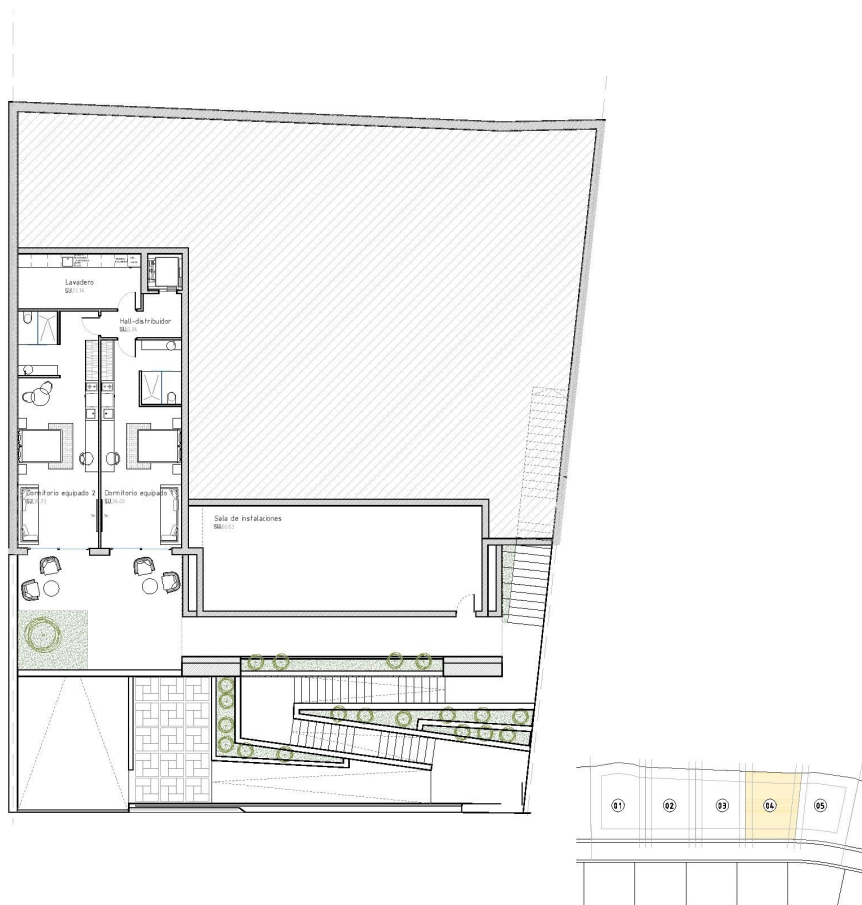
No Media available

FLOORPLANS

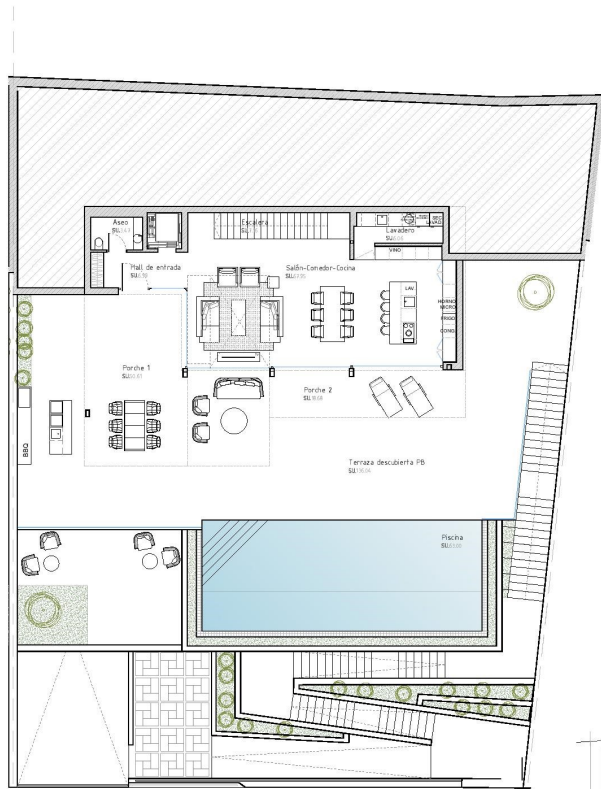
Image not found or type unknown



VILLA 4		
	SUP. ÚTIL (M2)	SUP. CONSTRUIDA (M2)
SEMISÓTANO 1		
Distribuidor	3,85	
Garaje	130,13	
TOTAL SEMISÓTANO 1	133,98	144,55
SEMISÓTANO 2		
Hall-Distribuidor	5,74	
Lavadero	13,74	
Dormitorio equipado 1	34,00	
Dormitorio equipado 2	38,73	
Sala de instalaciones	60,63	
TOTAL SEMISÓTANO 2	152,84	176,54
PLANTA BAJA		
Salón-Comedor-Cocina	67,55	
Hall de entrada	6,99	
Lavadero	6,06	
Aseo	3,47	
Escalera	7,16	
Porches cubiertos	69,29	50%
TOTAL PLANTA BAJA	160,92	141,255
PLANTA PRIMERA		
Dormitorio-Baño 1	38,52	
Vestidor 1	5,59	
Vestidor 2	5,60	
Dormitorio 2	12,39	
Baño 2	3,92	
Dormitorio 3	16,06	
Baño 3	2,50	
Distribuidor	15,71	
Escalera	7,18	
Balcón 1	15,86	50%
Balcón 2	8,37	50%
TOTAL PLANTA PRIMERA	131,70	138,715
SOLARIUM		
Torreón	2,01	
Jacuzzi	5,06	
Solarium - terrace	164,94	
TOTAL SOLARIUM	2,01	13,49
TOTAL VILLA 4	581,45	614,55
Piscina exterior	63,00	
Terraza exterior no cubierta	136,04	
Planta Baja		
Terraza privada 1 Planta Primera	65,74	
Terraza privada 2 Planta Primera	46,65	
Finestrat	Level	Scale
VILLA 4	Semisótano 1	1:150



VILLA 4		
	SUP. ÚTIL (M2)	SUP. CONSTRUIDA (M2)
SEMISÓTANO 1		
Distribuidor	3,85	
Garaje	130,13	
TOTAL SEMISÓTANO 1	133,98	144,55
SEMISÓTANO 2		
Hall-Distribuidor	5,74	
Lavadero	13,74	
Dormitorio equipado 1	34,00	
Dormitorio equipado 2	38,73	
Sala de instalaciones	60,63	
TOTAL SEMISÓTANO 2	152,84	176,54
PLANTA BAJA		
Salón-Comedor-Cocina	67,55	
Hall de entrada	6,99	
Lavadero	6,06	
Aseo	3,47	
Escalera	7,16	
Porches cubiertos	69,29	50%
TOTAL PLANTA BAJA	160,92	141,255
PLANTA PRIMERA		
Dormitorio-Baño 1	38,52	
Vestidor 1	5,59	
Vestidor 2	5,60	
Dormitorio 2	12,39	
Baño 2	3,92	
Dormitorio 3	16,06	
Baño 3	2,50	
Distribuidor	15,71	
Escalera	7,18	
Balcón 1	15,86	50%
Balcón 2	8,37	50%
TOTAL PLANTA PRIMERA	131,70	138,715
SOLARIUM		
Torreón	2,01	
Jacuzzi	5,06	
Solarium - terrace	164,94	
TOTAL SOLARIUM	2,01	13,49
TOTAL VILLA 4	581,45	614,55
Piscina exterior	63,00	
Terraza exterior no cubierta	136,04	
Planta Baja		
Terraza privada 1 Planta Primera	65,74	
Terraza privada 2 Planta Primera	46,65	
Finestrat		
VILLA 4	Level	Scale
	Semisótano 2	1:150

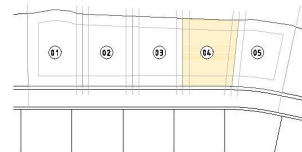


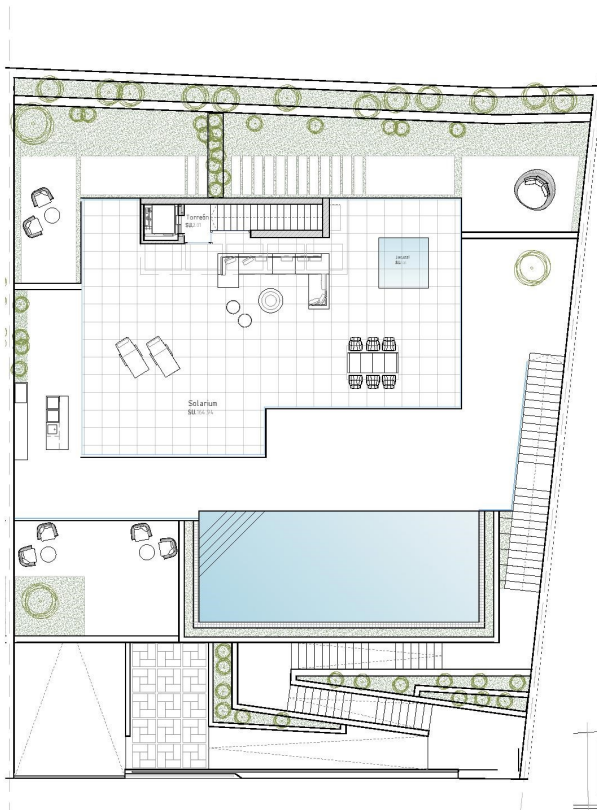
VILLA 4		
	SUP. ÚTIL (M2)	SUP. CONSTRUIDA (M2)
SEMISÓTANO 1		
Distribuidor	3,85	
Garaje	130,13	
TOTAL SEMISÓTANO 1	133,98	144,55
SEMISÓTANO 2		
Hall-Distribuidor	5,74	
Lavadero	13,74	
Dormitorio equipado 1	34,00	
Dormitorio equipado 2	38,73	
Sala de instalaciones	60,63	
TOTAL SEMISÓTANO 2	152,84	176,54
PLANTA BAJA		
Salón-Comedor-Cocina	67,55	
Hall de entrada	6,99	
Lavadero	6,06	
Aseo	3,47	
Escalera	7,16	
Porches cubiertos	69,29	50%
TOTAL PLANTA BAJA	160,92	141,255
PLANTA PRIMERA		
Dormitorio-Baño 1	38,52	
Vestidor 1	5,59	
Vestidor 2	5,60	
Dormitorio 2	12,39	
Baño 2	3,92	
Dormitorio 3	16,06	
Baño 3	2,50	
Distribuidor	15,71	
Escalera	7,18	
Balcón 1	15,86	50%
Balcón 2	8,37	50%
TOTAL PLANTA PRIMERA	131,70	138,715
SOLARIUM		
Torreón	2,01	
Jacuzzi	5,06	
Solarium - terrace	164,94	
TOTAL SOLARIUM	2,01	13,49
TOTAL VILLA 4	581,45	614,55
Piscina exterior	63,00	
Terraza exterior no cubierta	136,04	
Planta Baja		
Terraza privada 1 Planta Primera	65,74	
Terraza privada 2 Planta Primera	46,65	

Finestrat
VILLA 4

Level
Planta Baja

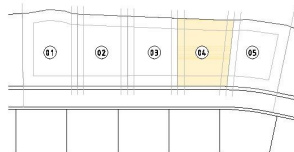
Scale
1:150

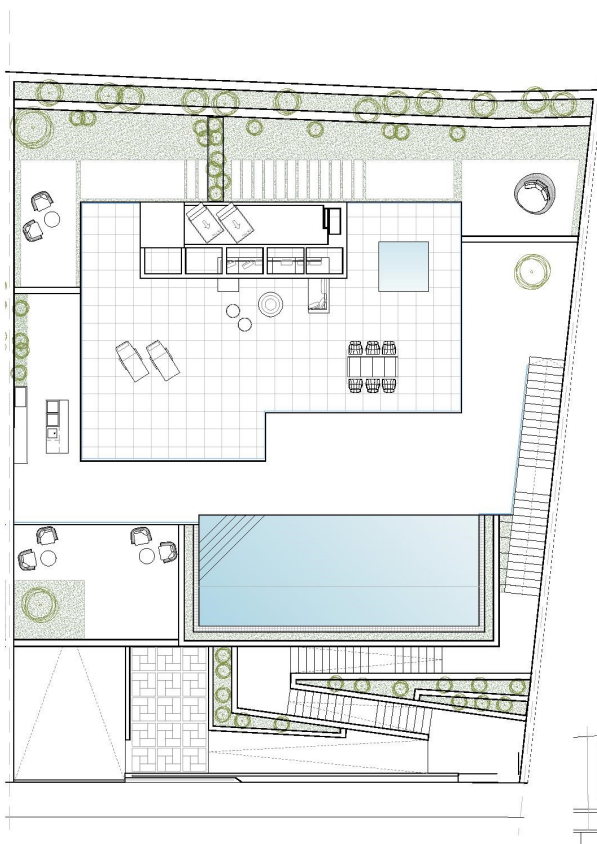




VILLA 4		
	SUP. ÚTIL (M2)	SUP. CONSTRUIDA (M2)
SEMISÓTANO 1		
Distribuidor	3,85	
Garaje	130,13	
TOTAL SEMISÓTANO 1	133,98	144,55
SEMISÓTANO 2		
Hall-Distribuidor	5,74	
Lavadero	13,74	
Dormitorio equipado 1	34,00	
Dormitorio equipado 2	38,73	
Sala de instalaciones	60,63	
TOTAL SEMISÓTANO 2	152,84	176,54
PLANTA BAJA		
Salón-Comedor-Cocina	67,55	
Hall de entrada	6,99	
Lavadero	6,06	
Aseo	3,47	
Escalera	7,16	
Porches cubiertos	69,29	50%
TOTAL PLANTA BAJA	160,92	141,255
PLANTA PRIMERA		
Dormitorio-Baño 1	38,52	
Vestidor 1	5,59	
Vestidor 2	5,60	
Dormitorio 2	12,39	
Baño 2	3,92	
Dormitorio 3	16,06	
Baño 3	2,50	
Distribuidor	15,71	
Escalera	7,18	
Balcón 1	15,86	50%
Balcón 2	8,37	50%
TOTAL PLANTA PRIMERA	131,70	138,715
SOLARIUM		
Torreón	2,01	
Jacuzzi	5,06	
Solarium - terrace	164,94	
TOTAL SOLARIUM	2,01	13,49
TOTAL VILLA 4	581,45	614,55
Piscina exterior	63,00	
Terraza exterior no cubierta	136,04	
Planta Baja		
Terraza privada 1 Planta Primera	65,74	
Terraza privada 2 Planta Primera	46,65	

Finestrat Level Scale
VILLA 4 Solarium 1:150





VILLA 4		
	SUP. ÚTIL (M2)	SUP. CONSTRUIDA (M2)
SEMISÓTANO 1		
Distribuidor	3,85	
Garaje	130,13	
TOTAL SEMISÓTANO 1	133,98	144,55
SEMISÓTANO 2		
Hall-Distribuidor	5,74	
Lavadero	13,74	
Dormitorio equipado 1	34,00	
Dormitorio equipado 2	38,73	
Sala de instalaciones	60,63	
TOTAL SEMISÓTANO 2	152,84	176,54
PLANTA BAJA		
Salón-Comedor-Cocina	67,55	
Hall de entrada	6,99	
Lavadero	6,06	
Aseo	3,47	
Escalera	7,16	
Porches cubiertos	69,29	50%
TOTAL PLANTA BAJA	160,92	141,255
PLANTA PRIMERA		
Dormitorio-Baño 1	38,52	
Vestidor 1	5,59	
Vestidor 2	5,60	
Dormitorio 2	12,39	
Baño 2	3,92	
Dormitorio 3	16,06	
Baño 3	2,50	
Distribuidor	15,71	
Escalera	7,18	
Balcón 1	15,86	50%
Balcón 2	8,37	50%
TOTAL PLANTA PRIMERA	131,70	138,715
SOLARIUM		
Torreón	2,01	
Jacuzzi	5,06	
Solarium - terrace	164,94	
TOTAL SOLARIUM	2,01	13,49
TOTAL VILLA 4	581,45	614,55
Piscina exterior	63,00	
Terraza exterior no cubierta	136,04	
Planta Baja		
Terraza privada 1 Planta Primera	65,74	
Terraza privada 2 Planta Primera	46,65	

Finestrat
VILLA 4

Level
Cubierta

Scale
1:150