



## 4 BEDROOM NOT SPECIFIED FOR SALE IN LISBON

### POA



REF: 1887759

### PROPERTY FEATURES

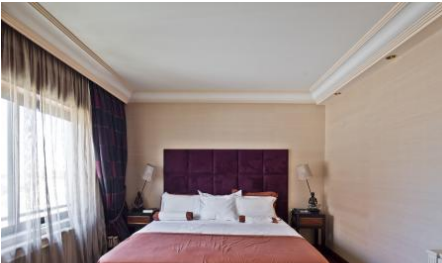
- Building Size: 729 m<sup>2</sup>

Fantastic triplex apartment in a closed condominium in Graça. Located in Graça, Villa Graça is an excellent private condominium, with indoor and outdoor swimming pool, garden overlooking the city, gym, squash court and 24 hour security.

This magnificent apartment is spread over the top 3 floors of the building, with a gross private area of 729m<sup>2</sup> and another 77m<sup>2</sup> of terraces, with a magnificent view of the city and the Tagus river. Comprising 6 rooms, 4 suites, 1 bedroom and 2 terraces, this apartment has the best finishes and equipment, providing you with maximum comfort and elegance. It also has a jacuzzi, 5 parking spaces, gym, sauna, Turkish bath and air-conditioned wine cellar.

Graça is located on the highest hill in Lisbon and is known for its viewpoint that offers an unbelievable view over the city of Lisbon. It is one of the oldest and most charming neighborhoods, and is located next to São Jorge Castle. Also famous for its restaurants and entertainment, this neighborhood located in the Historic Center of Lisbon, is just 20 minutes from Lisbon airport.

## PROPERTY PHOTOS



## LOCATION



No Media available

**No Floorplans available**