



5 BEDROOM HOUSE FOR SALE IN PAROW

Price **ZAR22,000,000**



REF: 1642724

PROPERTY FEATURES

- Dwelling size 689sqm, rates R4,116pm, levy R1,860pm
- Modern masterpiece in Baronetcy Estate
- 5 Air-conditioned en-suite bedrooms, all with views
- Open-plan living areas: lounge & dining, TV family room, braai room, pyjama lounge
- Huge modern kitchen with centre island, separate scullery and laundry
- Wrap-around deck with stunning views
- Splash pool
- 3 garages with direct access, loads of parking
- Manageable garden, backs onto the nature reserve
- A patch of heaven and a privileged lifestyle

Exquisite family home with unobstructed panoramic views in an unsurpassed location designed to enjoy

Built for the discerning buyer, this ultra-modern masterpiece in Baronetcy Estate is the crème de la crème. Architect designed with a light-filled open-plan interior, this modern masterpiece offers loads of extras including bespoke European oak floors throughout and a rare sense of luxury living at its finest, in an idyllic location boasting mesmerizing views of Table Mountain, the city and the sea.

This elegant home has five air-conditioned en-suite bedrooms plus a guest toilet, the opulent master-suite has a walk-in dressing area with a large bathroom with double vanities and spectacular views of Table Mountain from the windows and a private balcony. All the bedrooms have fibre connectivity and beautiful views.

The double volume living areas downstairs include a lounge, TV room, dining room, braai room and a huge modern kitchen with Siemens stove, a centre island and separate scullery and laundry. The kitchen is the hub of the home and, together with the free-flowing living areas, is conducive to entertaining and convivial get-togethers with family and friends. Enjoy sundowners and glorious sunsets on the wrap-around

deck with splash pool which connects with the living areas through imported double-glazed sliding and stacking doors.

There are 4 bedrooms upstairs with a large pyjama lounge and kitchenette. Double-glazed sliding doors provide access to a large balcony. The 5th bedroom/guest suite downstairs has a private balcony, also with stunning views of the nature reserve behind the home.

There are 3 Garages with direct access plus extra secure parking behind an automated gate for approx. 6 vehicles. The house is cleverly designed to enable easy maintenance and boasts a concrete roof with hidden downpipes and picture windows that are easy to clean. The garden is manageable with faux grass, indigenous plants and the nature reserve is on its doorstep.

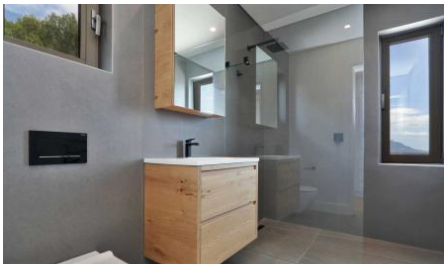
For those with school-going children it is important to note that apart from excellent local schools, a daily bus service operates from Panorama Engen Garage to Stellenbosch and Paarl schools – these include Paul Roos Gymnasium, Bloemhof High School, Rhenish Girls High, Paarl Boys High, Paarl Girls High, Laborie High School, La Rochelle and Hoërskool Gimnasium.

Offering a patch of heaven and a privileged lifestyle reserved for the very few, this beautiful home is not to be missed.

Disclaimer: Whilst every effort is made to ensure the accuracy of the information contained herein no warranty is given in that regard. E&OE.

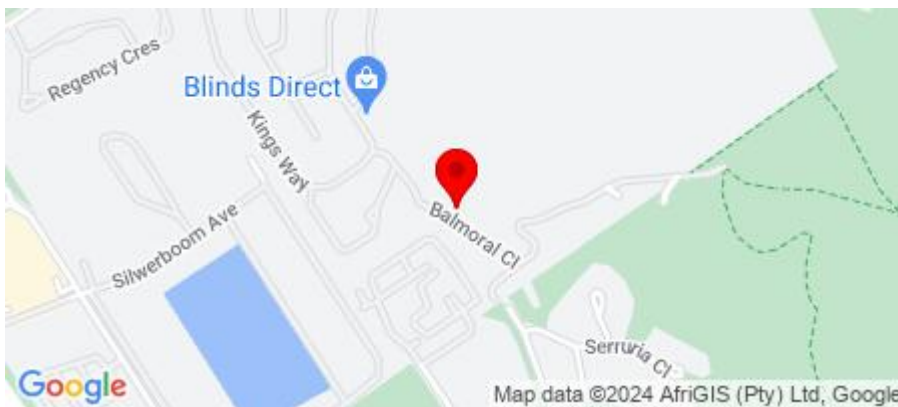
"Strict COVID19 Protocols will be applied at all times in preparation & during physical viewings of the property."

PROPERTY PHOTOS





LOCATION



No Media available

No Floorplans available