



3 BEDROOM PENTHOUSE FOR SALE IN PERTH

REF: 1432839

SOLD



PROPERTY FEATURES

- 20m Boat Pen
- Direct Internal Lift
- 225 m2 North Facing Terrace
- 3 Car Garage & Store
- Pool
- Tennis Court
- Gym
- Onsite Caretaker
- 2km To The Beach
- Direct Riverfront Views

A private lift spirits you directly to your floor and opens up to reveal your breathtaking location. Set against the commanding backdrop of the Swan River, large expanses of glass and retractable bifold doors perfectly frame panoramic water views, which linger beyond your expansive 225m2, north-facing alfresco terrace. Protected from the elements, this is where you'll want to immerse yourself. Whether you're sipping cocktails in the shadows of spectacular sunsets or watching on as boats or black swans glide by, there is no more idyllic place than this to embrace the tranquility on offer.

The finest in integrated living is yours to enjoy too, with the terrace seamlessly fusing with the indoors. Sit back and soak up the striking scenery from your light-filled living and dining room, or retreat to the gourmet kitchen, encased in natural light. Decorated in soothing neutrals, it features stainless steel appliances and an island bench, ideal for hosting cosy catch-ups and light-hearted conversation.

The spacious master suite will be your oasis and affords you the enviable opportunity to wake to water vistas. It also offers both a built-in and walk-in robe as well as an elegant ensuite with dual vanities and bath. Two more sun-infused bedrooms await, both with built in robes and private balconies, and are serviced by a well-appointed bathroom. The penthouse is also air-conditioned, for your year round comfort, with an underground and secure triple lock up garage plus storage

also included.

Boating enthusiasts will revel in having access to a private boat pen, with water and power connected and the ability to fit up to a 60ft vessel. The meticulously maintained and secure complex also boasts an onsite caretaker, a communal entertaining pavilion and alfresco area, tennis court and 25m lap pool. As well, take advantage of this impressive location, situated 2km from pristine beaches, 3km from Fremantle's vibrant dining and entertainment precinct, and close to one of Perth's finest golf courses, Royal Fremantle. If the CBD beckons, it's just 17km away.

Whether you wish to downsize to a luxurious waterfront abode or simply want to take advantage of being able to travel without the worry of leaving behind a large home, be assured this sophisticated penthouse, right on the Swan River, will meet your every need. Arrange your inspection today.

PROPERTY PHOTOS





LOCATION



No Media available

FLOORPLANS

Approximate Areas:

Apartment Internal 216m²

Main Balcony 225m²

Balcony 2 5m²

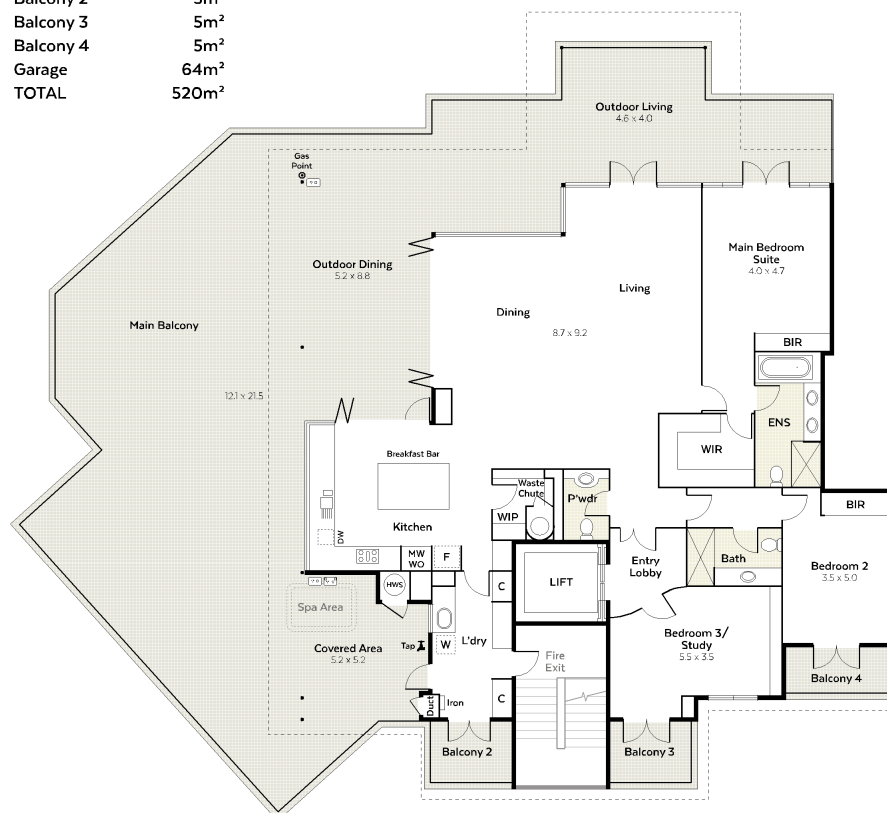
Balcony 3 5m²

Balcony 4 5m²

Garage 64m²

TOTAL 520m²

Penthouse The Moorings



0 1 2 3 4 5
Scale Bar (metres)

