



**5 BEDROOM SEMI-DETACHED HOUSE FOR SALE IN LONDON**

**Price £8,950,000**



REF: 3017265

**PROPERTY FEATURES**

- Five Bedrooms
- Three Receptions
- Conservatory
- Good Sized Garden
- Off-Street Parking
- Self-Contained Annexe

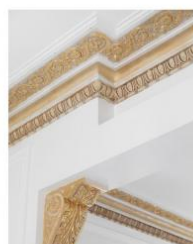
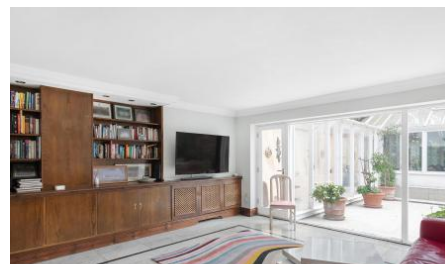
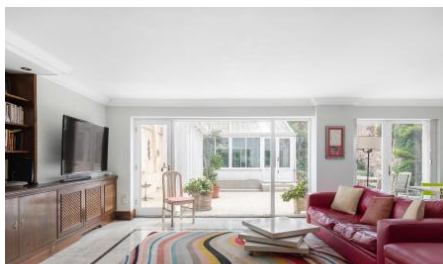
An impressive wider than average, stucco fronted, Victorian end of terrace five bedroom family house, with a separate self-contained flat with its own entrance. The house benefits from off-street parking for 3/4 cars to the front and a private 50 foot garden to the rear with a substantial conservatory.

Arranged over five floors, this fantastic house offers excellent living and entertaining space with high ceilings, period fireplaces and authentic cornices. The property boasts three generous reception rooms, a formal dining room, study, modern kitchen, five bedrooms and four bathrooms. The annex, which can be self-contained, enjoys garden views and consists of a reception, bedroom, kitchen and bathroom.

The property further benefits from a security system, air conditioning and off street parking for three or four cars.

The house is conveniently located for the shopping, entertainment and transport facilities of Kensington High Street, and within a short walk to Holland Park.

PROPERTY PHOTOS





## LOCATION



No Media available

## FLOORPLANS



Illustration for identification purposes only, measurements are approximate, not to scale. FloorplansUsketch.com © 2020 (ID694638)