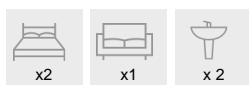




2 BEDROOM APARTMENT FOR SALE IN LONDON

From **£1,191,000**

REF: 2982887



PROPERTY FEATURES

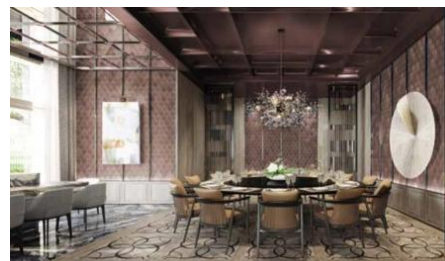
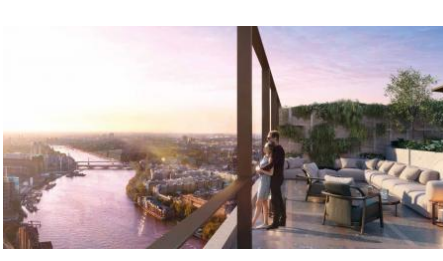
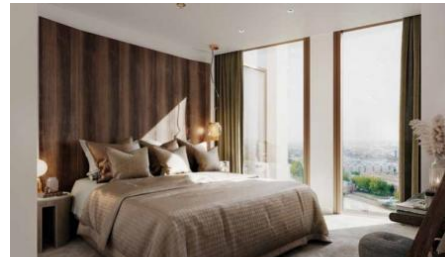
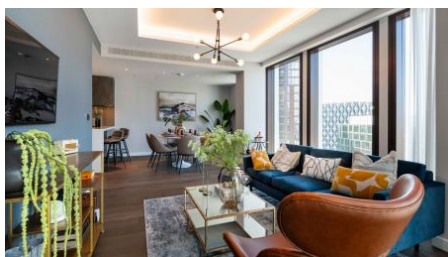
Fine & Country are delighted to present One Thames City, a luxurious development that offers stunning views of the City of London. With one to five bedroom apartments and penthouses available, residents can enjoy near-360 degree views of London and its outskirts from the comfort of their modern, high-spec living spaces. Every aspect of the furnishing and layout has been designed to perfection, providing residents with supremely comfortable and visually appealing homes.

In addition to the breathtaking views, One Thames City also boasts beautiful green spaces, including a linear park and podium gardens, which are perfect for relaxation and socializing. The development offers a wide range of amenities to suit everyone's needs, including a gymnasium, a 30m swimming pool and spa, a cinema room, an art gallery, a private dining area, a business center, a conference room, a library, a wellness center, a kids' club, and even a karaoke room. All of these facilities are accessible at your fingertips, making One Thames City your go-to destination for all your lifestyle and relaxation needs.

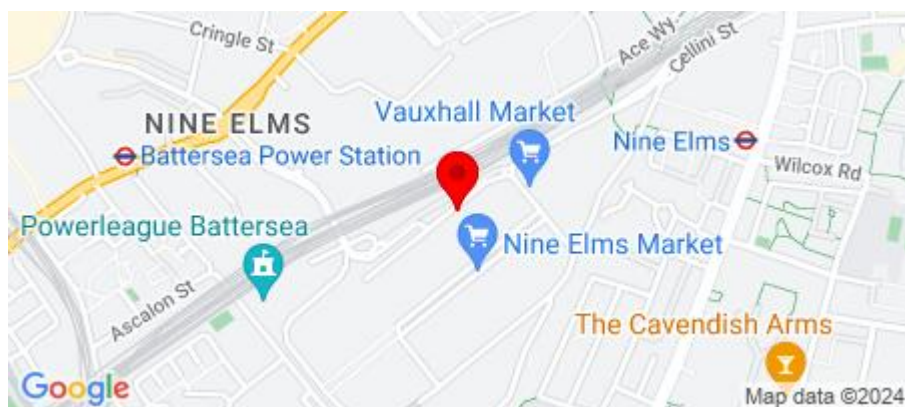
With excellent transportation links, getting around the city from One Thames City is a breeze. The development is just a five-minute walk from both Nine Elms tube station and Vauxhall railway station, providing easy access to the City of London and Covent Garden in under 20 minutes.

If you're interested in experiencing the exceptional living experience offered by One Thames City, please don't hesitate to enquire with Fine & Country's dedicated sales team to arrange a visit.

PROPERTY PHOTOS



LOCATION



No Media available

FLOORPLANS

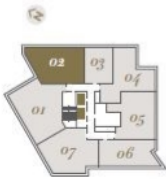
FLOOR PLAN

two bedroom
 RIVER VIEW

THREE BEDROOM APARTMENT

TOTAL AREA	123.7 sqm	1,331 sq ft
Living/Dining/Kitchen	5.98m x 8.67m	19'8" x 28'6"
Winter Garden	2.04m x 3.34m	6'8" x 10'12"
Master Bedroom	3.61m x 3.87m	11'10" x 12'9"
Bedroom Two	3.32m x 3.87m	10'11" x 12'9"

AVAILABLE ON FLOORS 20 TO 30



- Refrigerator
- Dishwasher
- Hub
- Wine cooler
- Oven
- Wardrobe

