



4 BEDROOM NOT SPECIFIED FOR SALE IN LONDON

Price £15,000,000



REF: 2834526

PROPERTY FEATURES

- Four Bedrooms
- Four Bathrooms (3 en-suite)
- Internal Lift
- Separate Dining Room
- Close to Hyde Park
- Approx 4800 Square Feet
- 5m High Ceilings
- EPC Rating D
- Private Patio Gardens
- Staff Entrance

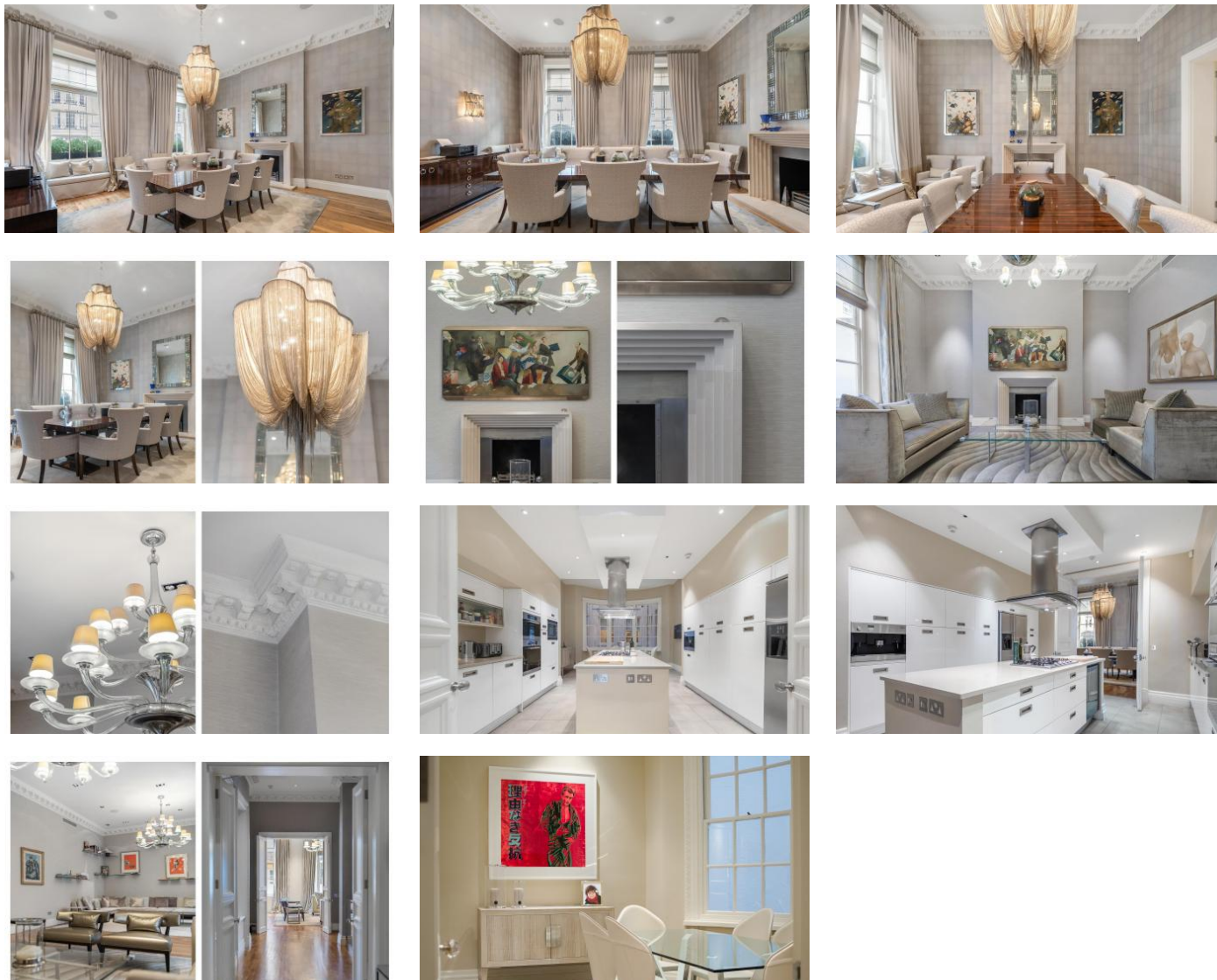
A grand residence on the Grosvenor Estate in arguably in one of the best locations in the world. This Mayfair split level apartment occupies two floors of this impressive stucco fronted Georgian property. This four bedroom apartment boats 5m high ceilings, a jaw dropping reception room and separate dining room with an abundance of original features with floor to ceiling windows in both rooms, four bathrooms (3 ensuite) a separate kitchen, a dressing room fit for a queen and a utility room.

This opulent apartment further benefits from a private, secluded rear garden and an internal patio garden, an internal lift and a sweeping staircase between floors.

Upper Grosvenor Street is a one way street leading from Grosvenor Square to Park Lane and the open spaces of Hyde Park.

Transport is provided by way of Marble Arch and Bond Street Underground Stations.

PROPERTY PHOTOS



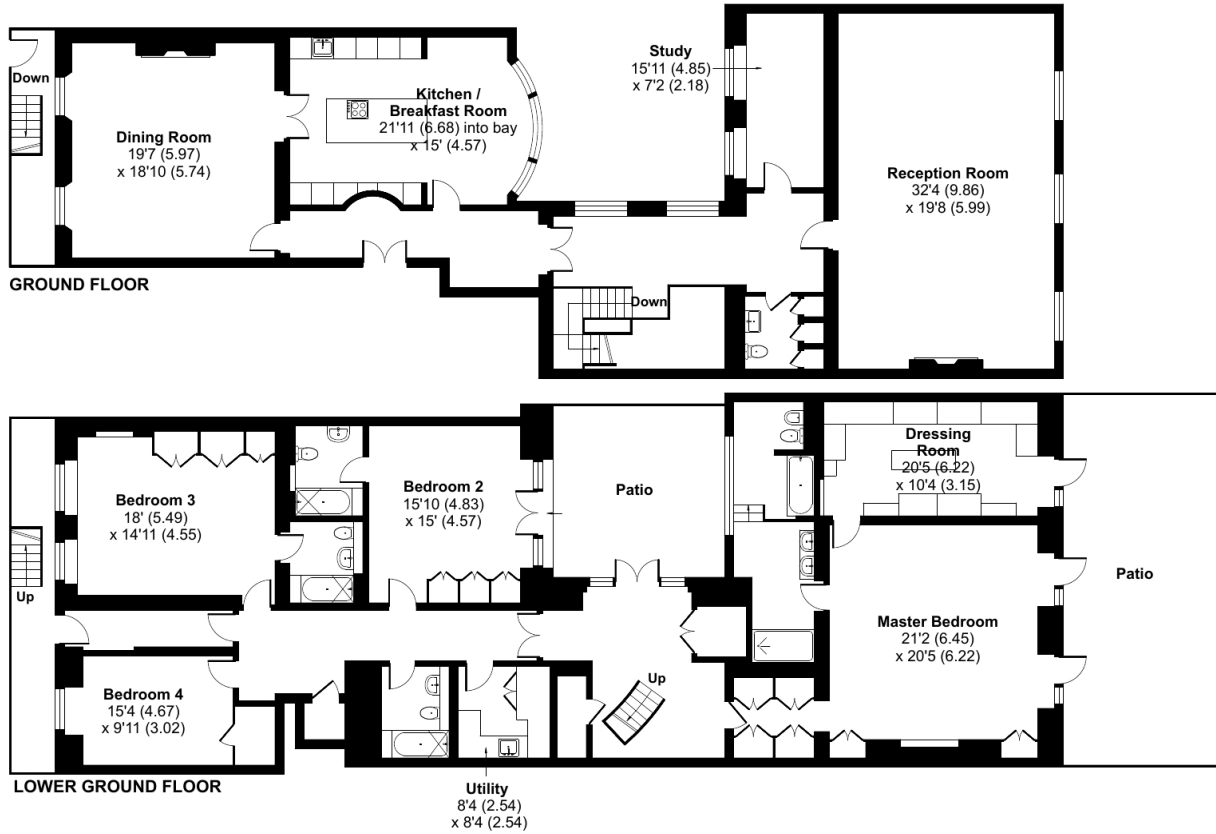
LOCATION



No Media available

FLOORPLANS

Upper Grosvenor Street, London, W1K



Floor plan produced in accordance with RICS Property Measurement Standards incorporating International Property Measurement Standards (IPMS2 Residential). © ncheccom 2023. Produced for Jefferies James. REF: 934105