



5 BEDROOM DETACHED HOUSE FOR SALE IN BRISTOL

Guide Price **£1,850,000**



REF: 2696529

PROPERTY FEATURES

- Council Tax Band will be confirmed by the local authority on completion of the property

An exceptional new build house offering luxurious living and finished to the highest of standards. Built by renowned Bristol builder Geoff Milton, the property combines traditional materials with modern home living and smart technology.

Standing behind the privacy of electric gates, this incredible home offers approx. 4,000 square feet of impressive accommodation. Split over three floors, each connected by stairs or by lift, Milton Lodge features French oak, large windows and mood lighting throughout, as well as underfloor heating and high quality Belgian windows.

Entering the home through double wooden doors, you're immediately welcomed in to a large reception hall with expansive ceilings, framed by exposed French oak beams, accompanied by glass balustrades and stunning light features. The ground floor is made up of a spacious living and dining room with a feature fire, semi open-plan to a bespoke handcrafted kitchen breakfast room incorporating top of the range appliances, a large utility room, cloakroom and WC. A large study with a further feature fireplace complete this floor and make for an ideal home office, playroom or snug.

Beautiful floating stairs lead you down to a light flooded basement with a cocktail bar, a wellbeing room with spa, Jacuzzi, sauna, steam room and Hammam shower, a cinema room with shooting star ceiling all prepped for Dolby surround, a plant room, guest bedroom suite and courtyard garden.

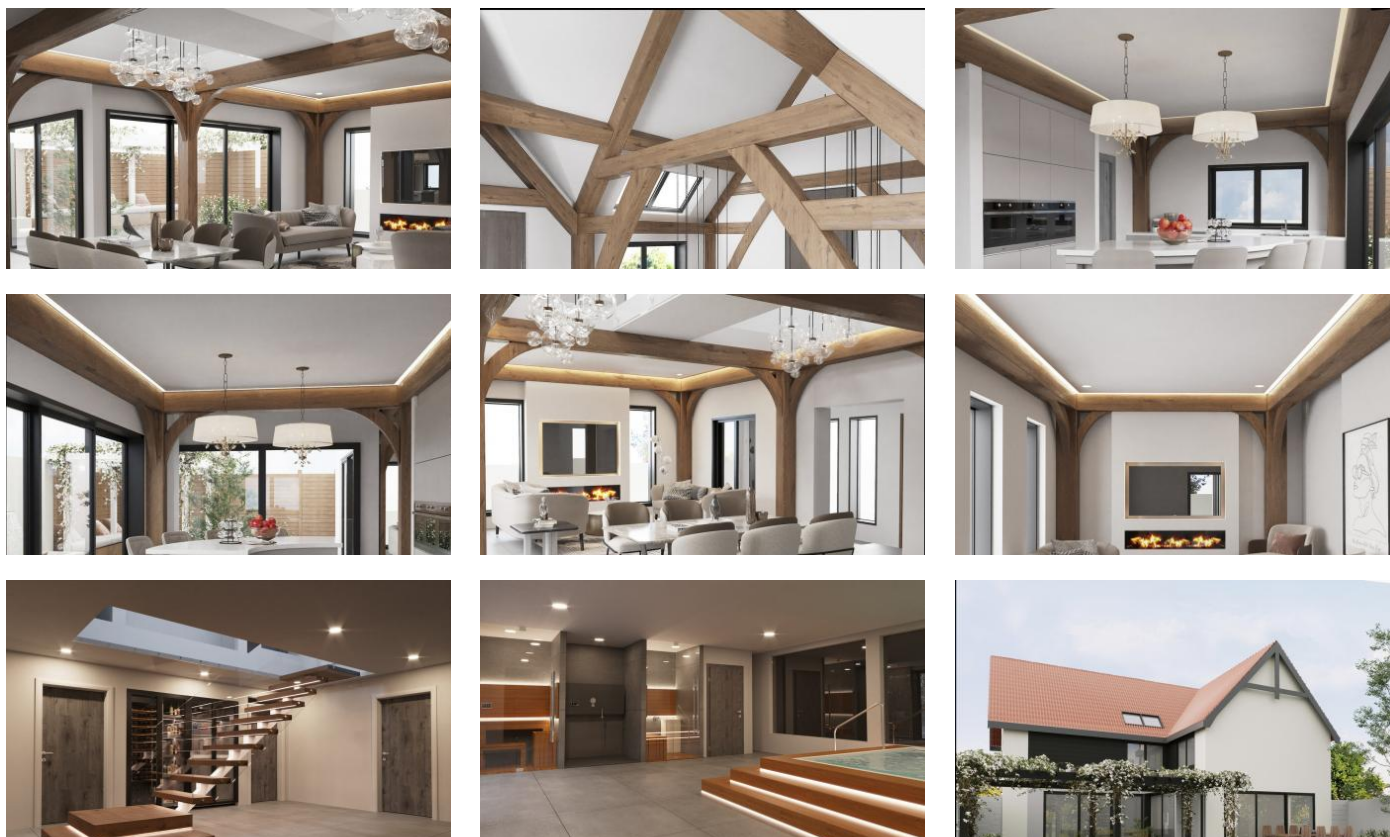
The wow factor continues to the first floor where four sumptuous bedroom suites provide the perfect space to relax and recharge, each accessed off a beautiful landing area flooded with light, showcasing more French oak and glass.

The luxurious lifestyle offered inside flows out to a beautifully enclosed rear courtyard garden with water features, alfresco dining space and stone stairs flowing down to the lower courtyard.

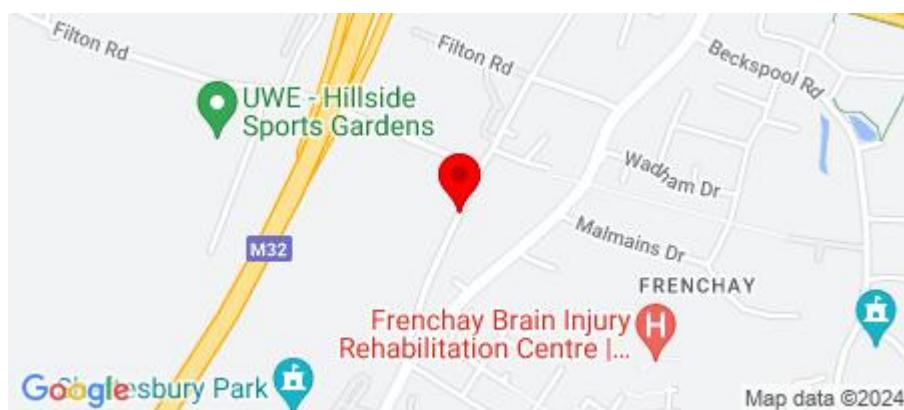
A 'one off' bespoke home offering the best in luxury living, quality craftsmanship, unrivalled entertaining and in a popular Bristol location.

NB: Images are artists impressions and may not reflect the true likeness of the property.

PROPERTY PHOTOS



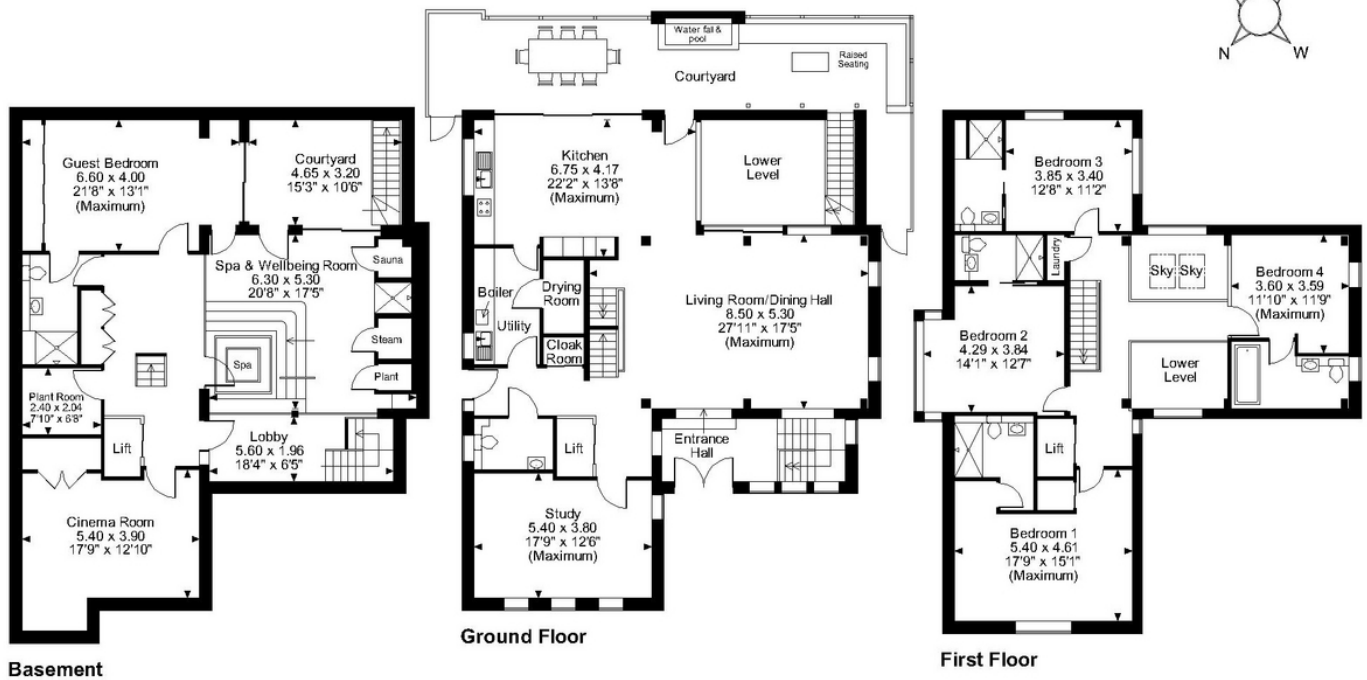
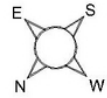
LOCATION



No Media available

FLOORPLANS

Milton Lodge, Old Gloucester Road, Bristol
Approximate Gross Internal Area
3953 Sq Ft/367 Sq M
 Quoted Area Excludes 'External Courtyard'



FOR ILLUSTRATIVE PURPOSES ONLY - NOT TO SCALE
 The position & size of doors, windows, appliances and other features are approximate only.
 © ehouse. Unauthorised reproduction prohibited. Drawing ref. dig/8491692/SS