



5 BEDROOM DETACHED HOUSE FOR RENT IN VIRGINIA WATER

£15,000 pcm +fees



REF: 2169439

PROPERTY FEATURES

- Prestigious Wentworth Estate
- Contemporary Finish Throughout
- Five Double Bedrooms
- Five Bathrooms
- Detached Residence
- Swimming Pool
- Six Reception Rooms
- Private Garage
- Pet Friendly

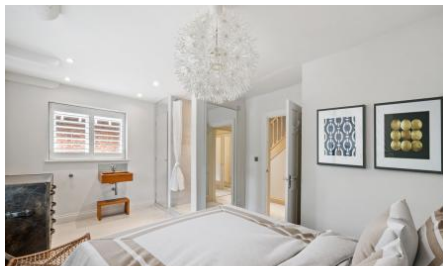
A gorgeous five bedroom family home situated on the enviable Wentworth Estate. This classic home has been tastefully modernised with an impeccable finish throughout. Arranged over three floors, the ground floor is entered via a grand entrance hall with two separate reception rooms to the left and a super stylish open plan kitchen/living room to the right. The ground floor also boasts a separate utility room and office. On the first floor you will find the principal bedroom with two dressing rooms and en-suite bathroom, three further en-suite bedrooms. The second floor hosts a fifth double bedroom and a modern family bathroom. Additionally the property benefits from a landscaped garden with swimming pool and water feature as well as a detached orangery. Situated on a large corner plot, the property has a sweeping 'In' and 'Out' driveway providing ample space for parking as well as a private garage.

Located on the prestigious Wentworth Estate, residents benefit from having the Wentworth Club on their doorstep. Home to the BMW PGA Championship, the club also boasts swimming pools, tennis courts, a health and leisure club and restaurants. Virginia Water provides a range of local amenities with nearby Windsor and Ascot offering a more extensive selection of shopping and eateries. Transport links include Virginia Water Station (0.3 miles) which provides a frequent service into London Waterloo. There are some outstanding schooling options available with many renowned private schools such as Eton College, Papplewick, Sunningdale, St Mary's, Hurst Lodge, Upton House, Bishopsgate and St John's Beaumont.

Additionally two highly regarded International/American schools are in the vicinity, namely ACS Egham and TASIS.

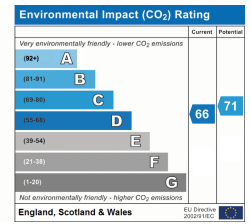
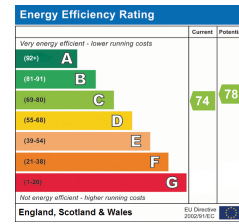
PROPERTY PHOTOS





LOCATION

EPC



FLOORPLANS



Nuns Walk, Virginia Water, GU25

Approximate Gross Internal Area = 556.6 sq m / 5992 sq ft
 (Including Garage)

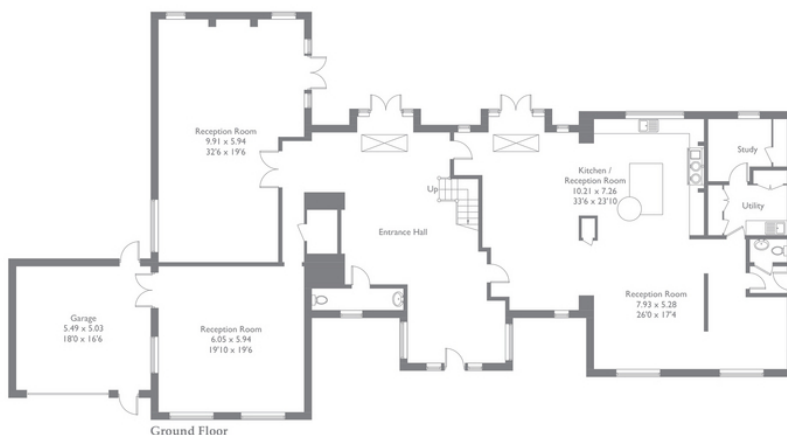


Illustration for identification purposes only, measurements are approximate, not to scale.