



3 BEDROOM TERRACED HOUSE FOR SALE IN LONDON

Guide Price **£950,000**

REF: 1765245

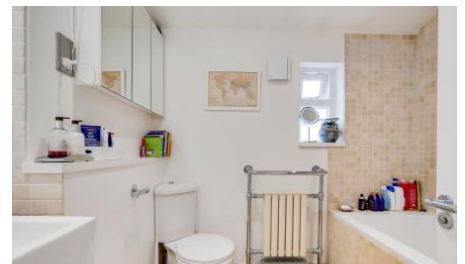
PROPERTY FEATURES



Set off a quiet side road just off the Holloway Road, the location falls conveniently within the excellently rated and highly sought after Yerbury Primary School, yet still offers easy access to both Upper Holloway Overground and Archway Underground.

Set over three floors, the ground floor benefits from a through lounge with bay window affording plenty of natural light and a well fitted modern kitchen opening up onto a well kept and good sized garden. The house has been sympathetically modernised throughout yet has retained many period features. Looking towards the future, there is also the possibility of extension into the loft subject to planning permission (and historically, a two storey extension has been previously granted). In short, a fine family home, with potential for the future.

PROPERTY PHOTOS



LOCATION



No Media available

FLOORPLANS

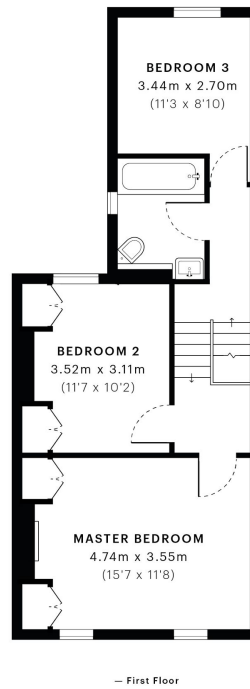
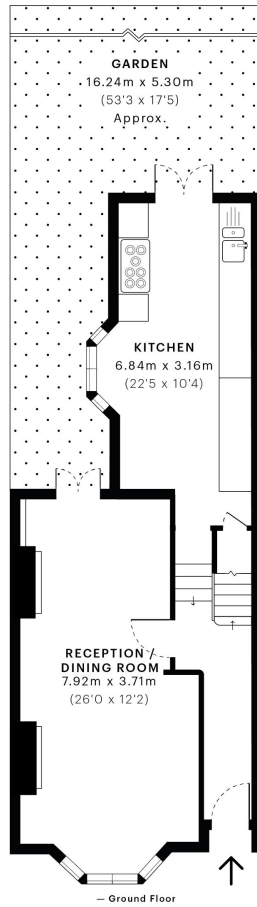
21

Kiver Road, N19

CAPTURE DATE
18/06/2020

LASER SCAN POINTS
30,153,846

GROSS INTERNAL AREA
101.2 Sqm / 1089.3 Sqft



GROSS INTERNAL AREA (GIA)
The footprint of the property.
101.2 Sqm / 1089.3 Sqft

NET INTERNAL AREA (NIA)
Excludes walls and external features.
Includes washrooms, restricted head
95.0 Sqm / 1022.4 Sqft

EXTERNAL STRUCTURAL FEATURES
Balconies, terraces, verandas etc.
0.0 Sqm / 0.0 Sqft

RESTRICTED HEAD HEIGHT
Limited use area under 1.5m
0.0 Sqm / 0.0 Sqft

spec

RICS

Spec floor plans are produced in accordance with the Royal Institution of Chartered Surveyors' Property Measurement Standards. Plots and gardens are illustrative only and are excluded from all area calculations. Due to rounding, numbers may not add up precisely. All measurements shown for the individual room lengths and widths are the maximum points of measurements captured in the scan.

IPMS 3B RESIDENTIAL
98.8 Sqm / 1063.5 Sqft
IPMS 3C RESIDENTIAL
95.7 Sqm / 1030.3 Sqft

SPEC ID
5eda03dd4b5000a1e550566